

MicroHelp IniClean help index

Welcome to Help for MicroHelp IniClean. Please choose any of the underlined items to get further help.

Introduction

[Introduction to IniClean](#)
[How to use IniClean's main window](#)

Menus

[File menu](#)
[Help menu](#)

Procedures

[Changing the directory](#)
[Changing the "New since" date](#)
[Deleting an association](#)
[Deleting an INI file](#)
[Deleting a section](#)
[Editing a section](#)
[Viewing an association](#)
[Viewing an INI file](#)
[Viewing a section](#)

Other

[About MicroHelp](#)
[About IniClean](#)
[Glossary](#)
[Technical information](#)
[Technical support](#)

About MicroHelp

You can get in touch with MicroHelp at the following address:

MicroHelp, Inc.

4359 Shallowford Industrial Parkway
Marietta, GA 30066

Sales: (800) 922-3383

Fax: (404) 516-1099

Technical support: (404) 516-0898

BBS: (404) 516-1877

Hours: Monday through Friday, 9:00 AM to 5:00 PM, Eastern Time

See also:

[About IniClean](#)

About MicroHelp IniClean

MicroHelp IniClean

Version 1.0

By Ken Spreitzer
Copyright © 1992, MicroHelp, Inc.
All rights reserved

MicroHelp and *IniClean* are trademarks of MicroHelp, Inc. Other names are trademarks or registered trademarks of their respective owners.

See also:

[About MicroHelp](#)

Association

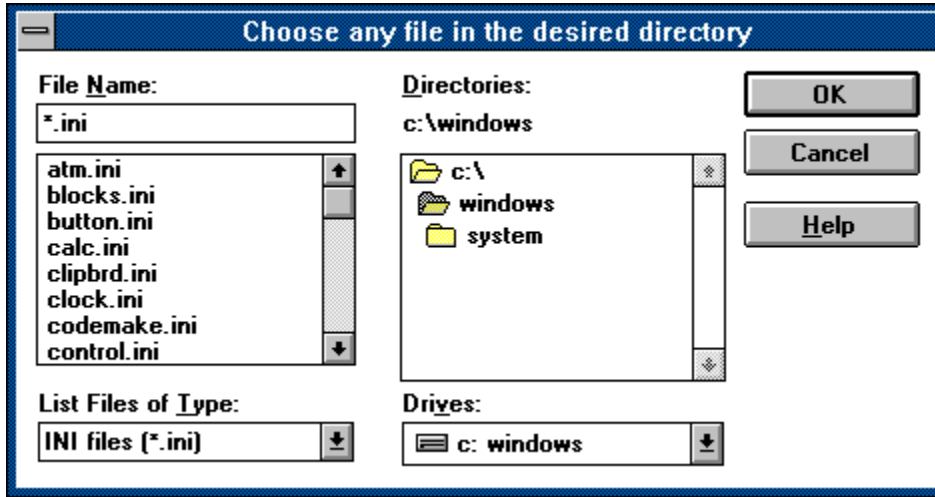
An association is created to identify files (for example, those files with extension "TXT") with the application that created them (for example, "NOTEPAD").

If you try to "run" a document (for example, "TO-DO.TXT") by double-clicking on it in the Windows File Manager, Windows will automatically run the associated application ("NOTEPAD") and load the desired data file ("TO-DO.TXT").

A typical example of an association is to say that TXT is associated with Notepad. This association is saved in WIN.INI and is written as: **TXT = NOTEPAD.EXE ^.TXT**.

IniClean allows you to view or delete associations. Use Windows File Manager to edit associations.

Change directory



When you want to view or edit an INI file in a different directory, use this dialog box to select any file in the desired directory. Once you have chosen any file in a directory, all INI files in that directory are available for editing.

To change directory:

1. If the "Choose any file in the desired directory" dialog box is not yet displayed, display it by choosing "Change directory" from the File menu of the main IniClean window.
2. Choose an available drive from the Drives list box.
3. Use the Directories list box to select the desired directory. Remember to always double-click (or press ENTER) in the Directories list box!
If the directory which you have selected contains any INI files, they will be listed in the file list box. If the directory does not contain any INI files, select another directory.
4. When you have located the directory containing the desired INI file, select the INI file and choose OK.

To close the dialog box without changing to another directory:

1. Choose the Cancel button.

Changing the "New since" date

Display <input type="radio"/> A ssociations <input checked="" type="radio"/> O ther INI files <input type="radio"/> S ections in WIN.INI	Which ones? <input type="radio"/> A ll <input checked="" type="radio"/> New since: <input type="text" value="08-01-1992"/> <input type="radio"/> N on-standard
---	---

When listing INI files, you can change the "New Since" date to force IniClean to list only those INI files which have been modified since a given date.

Note:

The "New since" option is only available in directories which contain a valid WIN.INI file, and is *not* available the first time that IniClean is run on each Windows directory.

To change the "New since" date:

1. Make sure that "Other INI files" is selected in the "Display" group box.
2. Select "New since" in the "Which ones?" group box.
3. Change the date in the edit field following the "New since" label.
4. Press ENTER to accept the new date.

Note:

You cannot change the "New since" date when listing associations or sections.

Command line options

IniClean can be started with any of the following command line formats:

Format: **IniClean**

This is the standard way of starting IniClean. When started no command line options, IniClean will default to the user's Windows directory.

Format: **IniClean *INI_file_spec***

Example: **IniClean D:\WIN30\WIN.INI**

Use this format to have IniClean switch to another directory instead of starting up with the current user's Windows directory. The file specified must exist, but does not have to be a WIN.INI file.

Format: **IniClean /INSTALL**

Using the /INSTALL option will have IniClean create an icon in the current user's Program Manager. The Quick Install window will pop up, and will allow the user to select a group in which the icon will be created. The default group name will be "Accessories" if it exists.

This option is very useful for network administrators. When IniClean is properly installed for shared use across a network, all of its files are located in one shareable directory. All that each user then needs to do is to run IniClean with the /INSTALL option in order to create an icon in one of their Program Manager groups.

Format: **IniClean /INSTALL /GROUP="*Group Name*"**

Example: **IniClean /INSTALL /GROUP="MH Utilities"**

Example: **IniClean /INSTALL /GROUP=Accessories**

You can add the /GROUP="*Group Name*" option to specify the default Program Manager group into which the IniClean icon will be added. Note that the double quotes are required if the group name contains any spaces; if the group name is just one word, then the quotes are optional.

Delete an association

To delete an association:

1. Make sure that "Associations" is selected in the "Display" group box.
2. Select the appropriate subset in the "Which ones?" group box.
3. Select the desired association in the list box.
4. Choose the Delete button.

You will be prompted to verify the deletion. If the selected association is a standard Windows association, the prompt will tell you so. Do not delete standard Windows associations unless you are sure that you know what you are doing.

WARNING

All deletions take place immediately after confirmation and cannot be undone!

See also:

[View an association](#)

Delete an INI file

To delete an INI file:

1. Make sure that "Other INI files" is selected in the "Display" group box.
2. Select the appropriate subset in the "Which ones?" group box.
3. Select the desired INI file in the list box.
4. Choose the Delete button.
You will be prompted to verify the deletion. If the selected INI file is a standard Windows INI file, the prompt will tell you so. Do not delete standard Windows INI files unless you are sure that you know what you are doing.

WARNING

All deletions take place immediately after confirmation and cannot be undone!

See also:

[Changing the "New since" date](#)

[View an INI file](#)

Delete a section

To delete a section from WIN.INI:

1. Make sure that "Sections in WIN.INI" is selected in the "Display" group box.
2. Select the appropriate subset in the "Which ones?" group box.
3. Select the desired section in the list box.
4. Choose the Delete button.
You will be prompted to verify the deletion. If the selected section is a standard Windows section, the prompt will tell you so. Do not delete standard Windows section unless you are sure that you know what you are doing.

WARNING

All deletions take place immediately after confirmation and cannot be undone!

To delete a section from another INI file:

1. Change to the directory containing the INI file.
2. Make sure that "Other INI files" is selected in the "Display" group box.
3. Select the appropriate subset in the "Which ones?" group box.
4. Select the desired file in the list box.
5. Choose the Edit button. A window will appear listing all sections contained within the selected INI file.
6. Choose the section which you would like to delete.
7. Choose the Delete button.
You will be prompted to verify the deletion.

WARNING

All deletions take place immediately after confirmation and cannot be undone!

Technical note:

If you delete a section from *your* WIN.INI file, the WM_WININICHANGE message will be sent to all top-level windows.

See also:

[Edit a section](#)

[View a section](#)

"Display" group box

Display

Associations

Other INI files

Sections in WIN.INI

This group box, located in the main window, is used to tell IniClean what types of settings you would like to see listed.

Select one of these values:

Associations

Other INI Files

Sections in WIN.INI

See *also*:

"Which ones?" group box

Edit a section

To edit a section of WIN.INI:

1. Make sure that "Sections of WIN.INI" is selected in the "Display" group box.
2. Select the appropriate subset in the "Which ones?" group box.
3. Select the desired section in the list box.
4. Choose the Edit button.
The section will be displayed in a popup dialog box.

To edit a section in another INI file:

1. Change to the directory containing the INI file.
2. Make sure that "Other INI files" is selected in the "Display" group box.
3. Select the appropriate subset in the "Which ones?" group box.
4. Select the desired file in the list box.
5. Choose the Edit button.
A window will appear which lists the sections in the specified file.
6. Select a section to edit.
7. Choose the Edit button.
The section will be displayed in a popup dialog box.

Technical note:

If you edit a section of *your* WIN.INI file, the WM_WININICHANGE message will be sent to all top-level windows.

See also:

Delete a section

View a section

Extension

Each file name (for example, "TO-DO.TXT") can have an "extension" of up to 3 characters (or optionally none) following the period in its name. For example, the file "TO-DO.TXT" has an extension of "TXT."

An extension can be associated with an application so that Windows knows what application created the file.

File menu

There are three options on the File menu:

Change directory...

Use this option to select another directory to clean with IniClean.

Return to personal Windows directory...

Use this option to return to your personal Windows directory. This menu item will only be enabled when you are in a directory other than your Windows directory.

Exit

Choose this menu item to exit IniClean.

Glossary

Association

Extension

INI file

Item

Section

WIN.INI

Help menu

There are several items on the Help menu:

Current selection

Choosing this option calls up help relevant to what you are currently doing.

Shortcut: Press F1

Index

The Index option calls up this help file and displays the [help index](#).

Glossary

Choosing this option displays the [help glossary](#).

Technical Support

This option displays a help topic which has the telephone number for [MicroHelp's](#) technical support. This phone number can also be obtained by choosing the About option from the Help menu.

About...

Displays information [about IniClean](#).

INI file

An "INI file" is a text file with an extension of INI. It is used to store settings that programs need in order to operate correctly. INI files can hold information such as selected screen colors, types of printers installed in your system, or customization options for a particular program.

Some examples of common INI files are: WIN.INI, SYSTEM.INI, and PROGMAN.INI.

WIN.INI and SYSTEM.INI are very important files; they are like a combination of CONFIG.SYS and AUTOEXEC.BAT for the Windows operating environment.

INICLEAN.INI

IniClean saves a list of the known associations and WIN.INI sections for each Windows directory that it examines. These lists are stored to a file named INICLEAN.INI in the Windows directory.

The INICLEAN.INI file has the following format:

[Extensions]

; contains a line for each known extension
; note that only the extension is saved, not the associated command line

ABC=

DEF=

XYZ=

[Sections]

; contains a line for each known section of the WIN.INI file in the same directory

Sec1Name=

Sec2Name=

Introduction to IniClean

IniClean is a quick and easy way to keep your WIN.INI file clean, and to perform basic management on other INI files in your Windows directory. IniClean allows you to view and delete the following items:

Associations
INI files
Sections

IniClean also allows editing of your WIN.INI file and other INI files; editing of associations is not provided by IniClean.

Why do I need it?

Many Windows programs write some private information into your WIN.INI file. If you delete one of these programs from your system, the extra lines of information remain in your WIN.INI file. These extra lines take up disk space and can cause Windows to run slower.

Most users have unnecessary information in their WIN.INI file.

What's the best way to use IniClean?

The first time that you run IniClean, examine all items (all associations, all INI files, all sections) to find and delete any unnecessary items.

Each time you run IniClean subsequently, you can use one of IniClean's special features to list just those items which have been created since the last time that you ran IniClean. To use this feature, just choose "New since (date)" in the "Which ones?" group box. Using this feature, you can quickly and easily determine if any additions have been recently made which may impact your Windows performance. This special feature relieves you of checking all of the information in your WIN.INI each time you run IniClean; instead, you can just review the new items.

Is it safe?

Yes, IniClean is very safe. Before you delete any information, IniClean will always prompt you to confirm that you really do want to delete the item. In addition, IniClean will tell you (in the same prompt) if the item that you are going to delete is a standard component of Windows that should not be deleted. This prevents you from accidentally deleting a component of Windows that you don't recognize but that Windows needs in order to run.

Item

The term "item" is used to mean any one of the following three types:

Association

INI file

Section

Main window

IniClean has one main window which you use to perform most tasks. From this window, you can select the type of items that you want to list, and then view or delete an item.

Main procedure

1. Select an item type in the "Display" group box.
2. Select the subset to be listed in the "Which ones?" group box.
3. Select one of the items listed in the main list box.
4. View, edit, or delete the item. (Only INI files and sections may be edited.)

See also:

[Changing the directory](#)

[Changing the "New since" date](#)

[Deleting an association](#)

[Deleting an INI file](#)

[Deleting a section](#)

[Editing a section](#)

[Viewing an association](#)

[Viewing an INI file](#)

[Viewing a section](#)

Section

The term "section" refers to a group of lines of text in your WIN.INI file or any other INI file. Sections are often added to INI files when a new program is installed, but they are usually not removed when the program is uninstalled.

Section editor

Use this dialog box to edit a section.

WARNING

Do not use this dialog box unless you are sure that you know what you are doing. Incorrect modification of sections can cause Windows and other applications to stop working.

To add a new keyword and value:

1. In the Keyword field, type the new keyword.
2. In the Value field, type the string to be associated with the new keyword.
3. Choose the Write button.

To edit an existing value:

1. Select the desired keyword in the Lines list box.
The keyword and its associated value string will be displayed in the two fields at the bottom of the dialog box.
2. Change the string in the Value field.
3. Choose the Write button to write the changes to the section.
If you decide that you don't want to make the change, choose the Undo button.

To edit an existing keyword:

1. Select the desired keyword in the Lines list box.
The keyword and its associated value string will be displayed in the two fields at the bottom of the dialog box.
2. Change the string in the Keyword field.
3. Choose the Write button to write the changes to the section.
The new keyword will be written to the section, and the original keyword will remain in the section. If you want to delete the original keyword, select it and then choose the Delete button.

To delete an existing keyword:

1. Select the desired keyword in the Lines list box.
2. Choose the Delete button to delete the line from the section.

To delete an existing value but keep the keyword:

1. Select the desired keyword in the Lines list box.
The keyword and its associated value string will be displayed in the two fields at the bottom of the dialog box.
2. Erase the string in the Value field.
3. Choose the Write button to write the changes to the section.
If you decide that you don't want to make the change, choose Undo button.

Select a section to edit

Use this window to select a section of an INI file to edit, or to delete a section from an INI file.

To select a section to edit:

1. Select the name of the section which you want to edit.
2. Choose the Edit button.
The section editor window then appears, allowing you to edit the chosen section.

To delete a section:

1. Select the name of the section which you want to delete.
2. Choose the Delete button.
You will be given one chance to confirm the deletion of the chosen section.

Standard associations

The following file extensions are considered to be standard:

Ext	Associated application
BMP	Paintbrush (PBRUSH.EXE)
CAL	Calendar (CALENDAR.EXE)
CLP	Clipboard viewer (CLIPBRD.EXE)
CRD	Cardfile (CARDFILE.EXE)
HLP	Help (WINHELP.EXE)
INI	Notepad (NOTEPAD.EXE)
MID	Media player (MPLAYER.EXE) -- MIDI file
MMM	Media player (MPLAYER.EXE) -- Movie file
PCX	Paintbrush (PBRUSH.EXE)
REC	Macro recorder (RECORDER.EXE)
RMI	Media player (MPLAYER.EXE) -- Sequencer file
TRM	Terminal (TERMINAL.EXE)
TXT	Notepad (NOTEPAD.EXE)
WAV	Sound recorder (SOUNDREC.EXE) -- Waveform audio file
WRI	Write (WRITE.EXE)

IniClean does **not** verify that a standard extension is actually associated to the standard application.

See also:

[Standard INI files](#)

[Standard sections](#)

Standard INI files

The following INI files are considered to be standard:

File	Used by
ATM.INI	Adobe Type Manager
CLOCK.INI	Clock (CLOCK.EXE)
CONTROL.INI	Control Panel (CONTROL.EXE)
DOSAPP.INI	DOS applications settings (Windows 3.1)
INICLEAN.INI	IniClean (INICLEAN.EXE)
MOUSE.INI	Mouse settings
MPLAYER.INI	Media Player (MPLAYER.EXE)
MSD.INI	Microsoft Diagnostics (MSD.EXE)
NDW.INI	Norton Desktop for Windows (NDW.EXE)
PENWIN.INI	Pen Windows
PROGMAN.INI	Program Manager (PROGMAN.EXE)
SYSTEM.INI	System & boot-up configuration
WIN.INI	System configuration
WINFILE.INI	File Manager (WINFILE.EXE)
WINMINE.INI	Minesweeper game (Windows 3.1) (WINMINE.EXE)

See also:

[Standard associations](#)

[Standard sections](#)

Standard WIN.INI sections

The following sections of the WIN.INI file are considered to be standard:

Section	Used by
Cardfile	Cardfile (CARDFILE.EXE)
Clock	Clock (CLOCK.EXE) (Windows 3.0)
Colors	Windows
Compatibility	Windows 3.1
Desktop	Windows
Devices	Windows
Display driver	Pen Windows
Embedding	Windows (Object Linking & Embedding [OLE] information)
Extensions	Windows
Fonts	Windows
FontSubstitutes	Windows
Intl	Windows
MCI extensions	Windows
MCI.*	Windows
MSCharMap	Character map (CHARMAP.EXE)
MSWrite	Write (WRITE.EXE)
Network	Network
Networks	Network
OldFonts	Windows
Paintbrush	Paintbrush (PBRUSH.EXE)
Ports	Windows
PrinterPorts	Windows
Programs	Windows 3.1
RegEdit	Registration Editor (REGEDIT.EXE)
Solitaire	Solitaire (SOL.EXE)
Sounds	Windows
Spooler	Print Manager (PRINTMAN.EXE)
Terminal	Terminal (TERMINAL.EXE)
TrueType	Windows
Windows Help	Windows Help (WINHELP.EXE)
Windows	Windows

Note that not all of these sections are required for proper operation of every system.

See also:

[Standard associations](#)

[Standard INI files](#)

Technical Information

[Command line options](#)

[INICLEAN.INI](#)

[List of standard Windows associations](#)

[List of standard Windows INI files](#)

[List of standard Windows WIN.INI sections](#)

[Technical support phone number](#)

[WM_WININICHANGE message](#)

View an association

To view an association:

1. Make sure that "Associations" is selected in the "Display" group box.
2. Select the appropriate subset in the "Which ones?" group box.
3. Select the desired association in the list box.
4. Choose the View button.
The association will be displayed in a popup dialog box.

See also:

Delete an association

View an INI file

To view an INI file:

1. Make sure that "Other INI files" is selected in the "Display" group box.
2. Select the appropriate subset in the "Which ones?" group box.
3. Select the desired INI file in the list box.
4. Choose the View button.
The INI file will be displayed in a popup dialog box.

See also:

[Changing the "New since" date](#)

[Delete an INI file](#)

View a section

To view a section of WIN.INI:

1. Make sure that "Sections" is selected in the "Display" group box.
2. Select the appropriate subset in the "Which ones?" group box.
3. Select the desired section in the list box.
4. Choose the View button.
The section will be displayed in a popup dialog box.

To view a section of another INI file:

1. Change to the directory containing the INI file.
2. Make sure that "Other INI files" is selected in the "Display" group box.
3. Select the appropriate subset in the "Which ones?" group box.
4. Select the desired file in the list box.
4. Choose the View button to display the entire INI file at once, or choose the Edit button to use the section editor to view the section.

See also:

Delete a section

Edit a section

Viewer

The viewer dialog box is used to display the contents of an INI file or WIN.INI section.

To close the viewer:

1. Choose the Close button.

To copy the contents of the viewer to the clipboard:

1. Select the desired text in the Contents box of the viewer.
2. Press CTRL+INSERT to copy the selected text to the clipboard. If you are running Windows version 3.1 or later, you may also press CTRL+C to copy the text to the clipboard.

After copying text to the clipboard you may wish to switch to another application to paste the data.

Note:

You may edit the contents of the Viewer, but the changes will **not** be written to the INI file or WIN.INI section.

"Which ones?" group box

Which ones?

All

New since 08-03-1992

Non-standard

Once you have used the "Display" group box to select the type of settings that you would like to see listed, use this group box to tell IniClean *how many* of the selected type you would like to see listed. This group box allows you to list all, or just some, of the selected settings.

Select one of these values:

All

This is the full set (all items).

New since date

This lists only those items which have been created since the last time IniClean was run. This option is very useful when you are running IniClean just after you have finished installing a new program because it will show you what new items the program created when it was installed. The "New since" date can be changed when you are listing INI files.

Non-standard

This lists only those items which are not a standard part of Windows.

"Items" are associations, INI files, or sections.

See also:

"Display" group box

WIN.INI file

The WIN.INI file is a very important file which every Windows user has in their Windows directory. WIN.INI and a companion file (SYSTEM.INI) are like CONFIG.SYS and AUTOEXEC.BAT for Windows.

WIN.INI contains important settings which control how Windows works. Many other programs also put settings into WIN.INI.

You should always be very careful when changing the WIN.INI; improper settings can cause Windows (or other applications) to work improperly.

WM_WININICHANGE

Note:

This information is provided for advanced technical users.

The WM_WININICHANGE message will be sent to all top-level windows if you edit or delete a section of *your own* WIN.INI file. It will not be sent if you are editing a different WIN.INI file.